

TILT FOOT BAR, TILT FEET

- Tilt and swivel carry handle bars made of plastic and diecast zinc. With matching anodised aluminium profile, cut to the correct width for your enclosure, and supplied as a separate component.
- For small plastic enclosures we also offer a range of tilt foot bars which can be fitted anywhere on the base, and provide an ergonomic reading angle.



Customising Options

What do you still need for your own very personal product? We can supply enclosures and tuning knobs with all necessary modifications for fitting your electronic components.
 Customising options for Tilt foot bar, tilt feet



Machining



Printing



Laser marking



Special material



Installation / Assembly
 of accessories

TILT FOOT BAR, TILT FEET

Select Versions



A0350007
 Tilt foot
 ABS (UL 94 HB)
 off-white RAL 9002



A0350008
 Tilt foot
 ABS (UL 94 HB)
 pebble grey RAL 7032



A9152057
 Tilt foot bar
 ABS (UL 94 HB)
 off-white RAL 9002



A9152058
 Tilt foot bar
 ABS (UL 94 HB)
 lava



A9152059
 Tilt foot bar
 ABS (UL 94 HB)
 black RAL 9005



A9209229
 Anti-slide feet 8.5 x 2.2 mm
 black



A9210180
 Anti-slide feet 10,1 x 1.8 mm
 transparent



A9210290
 Anti-slide feet 9.5 x 3.8 mm
 transparent



A9212330
 Anti-slide feet 12 x 3.5 mm
 transparent



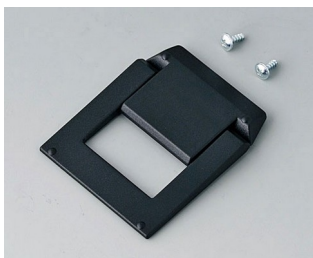
A9250807
 Tilt foot bar
 ABS (UL 94 HB)
 off-white RAL 9002



A9250809
 Tilt foot bar
 ABS (UL 94 HB)
 black RAL 9005



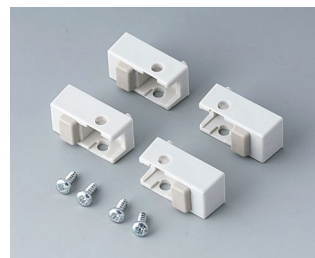
A9250817
 Tilt foot bar
 ABS (UL 94 HB)
 off-white RAL 9002



A9250819
 Tilt foot bar
 ABS (UL 94 HB)
 black RAL 9005



A9257105
 Case feet, Vers. I
 ABS (UL 94 HB)
 light grey RAL 7035



A9257107
 Case feet, Vers. I
 ABS (UL 94 HB)
 off-white RAL 9002



A9257109
 Case feet, Vers. I
 ABS (UL 94 HB)
 black RAL 9005

TILT FOOT BAR, TILT FEET



A9257205
Case feet, Vers. II
ABS (UL 94 HB)
light grey RAL 7035



A9257207
Case feet, Vers. II
ABS (UL 94 HB)
off-white RAL 9002



A9257209
Case feet, Vers. II
ABS (UL 94 HB)
black RAL 9005



A9257404
Case feet, Vers. I
ABS (UL 94 HB)
anthracite grey RAL 7016
ø30x12mm



A9257405
Case feet, Vers. I
ABS (UL 94 HB)
light grey RAL 7035
ø30x12mm



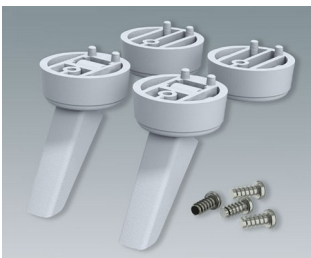
A9257407
Case feet, Vers. I
ABS (UL 94 HB)
off-white RAL 9002
ø30x12mm



A9257409
Case feet, Vers. I
ABS (UL 94 HB)
black RAL 9005
ø30x12mm



A9257504
Case feet, Vers. II
ABS (UL 94 HB)
anthracite grey RAL 7016
ø30x12mm



A9257505
Case feet, Vers. II
ABS (UL 94 HB)
light grey RAL 7035
ø30x12mm



A9257507
Case feet, Vers. II
ABS (UL 94 HB)
off-white RAL 9002
ø30x12mm



A9257509
Case feet, Vers. II
ABS (UL 94 HB)
black RAL 9005
ø30x12mm

Accessory



A9207150
Anti-slide feet 6.5 x 2 mm
transparent