

DIN-MODULAR CASES TYPE A

Versatile panel mount DIN boxes

Our TYPE A DIN-MODULAR plastic enclosures are designed according to DIN IEC 61554*, and feature snap-together assembly for faster installation, unlike conventional DIN boxes which require assembly by screws.

- seven standard dimensions 72 x 36, 48 x 48, 96 x 48, 72 x 72, 96 x 96*, 144 x 72* and 144 x 144 with variable case depths (*does not correspond exactly to DIN IEC 61554)
- material corresponds to UL 94 V-0: self-extinguishing and shock resistant; high standard of mechanical and electrical properties
- fixing of the PCBs by the rear frame
- fast and secure snap-together assembly
- range of front and rear panels
- fastening elements for mounting the control panels included
- advantage of the design principle is the implementation of optional case length to match the application exactly
- transparent cover protects display and operating elements (sizes 96 x 48 to 144 x 144)
- PCB guides on two or all four internal faces
- protection class < IP 40



Customising Options

What do you still need for your own very personal product? We can supply enclosures and tuning knobs with all necessary modifications for fitting your electronic components. Customising options for DIN-Modular Cases Type A

DIN-MODULAR CASES TYPE A



Machining



Lacquering



Printing



Laser marking



Installation / Assembly
of accessories

Select Versions



B6012011
DIN-MODULAR CASE TYPE A
PPO (UL 94 V-0)
black RAL 9005
48x48x57mm



B6012021
DIN-MODULAR CASE TYPE A
PPO (UL 94 V-0)
black RAL 9005
48x48x75mm



B6012031
DIN-MODULAR CASE TYPE A
PPO (UL 94 V-0)
black RAL 9005
48x48x100mm



B6012051
DIN-MODULAR CASE TYPE A
PPO (UL 94 V-0)
black RAL 9005
48x48x114mm



B6012061
DIN-MODULAR CASE TYPE A
PPO (UL 94 V-0)
black RAL 9005
48x48x124mm



B6021011
DIN-MODULAR CASE TYPE A
PPO (UL 94 V-0)
black RAL 9005
72x36x57mm



B6021021
DIN-MODULAR CASE TYPE A
PPO (UL 94 V-0)
black RAL 9005
72x36x75mm



B6021031
DIN-MODULAR CASE TYPE A
PPO (UL 94 V-0)
black RAL 9005
72x36x100mm



B6023011
DIN-MODULAR CASE TYPE A
PPO (UL 94 V-0)
black RAL 9005
72x72x57mm



B6023021
DIN-MODULAR CASE TYPE A
PPO (UL 94 V-0)
black RAL 9005
72x72x75mm



B6023031
DIN-MODULAR CASE TYPE A
PPO (UL 94 V-0)
black RAL 9005
72x72x100mm



B6023061
DIN-MODULAR CASE TYPE A
PPO (UL 94 V-0)
black RAL 9005
72x72x124mm

DIN-MODULAR CASES TYPE A



B6032011
DIN-MODULAR CASE TYPE A,
Vers. I
PPO (UL 94 V-0)
black RAL 9005
96x48x57mm



B6032021
DIN-MODULAR CASE TYPE A,
Vers. I
PPO (UL 94 V-0)
black RAL 9005
96x48x75mm



B6032031
DIN-MODULAR CASE TYPE A,
Vers. I
PPO (UL 94 V-0)
black RAL 9005
96x48x100mm



B6032041
DIN-MODULAR CASE TYPE A,
Vers. I
PPO (UL 94 V-0)
black RAL 9005
96x48x109mm



B6032051
DIN-MODULAR CASE TYPE A,
Vers. I
PPO (UL 94 V-0)
black RAL 9005
96x48x114mm



B6032061
DIN-MODULAR CASE TYPE A,
Vers. I
PPO (UL 94 V-0)
black RAL 9005
96x48x124mm



B6032072
DIN-MODULAR CASE TYPE A,
Vers. II
PPO (UL 94 V-0)
black RAL 9005
96x48x131mm



B6034011
DIN-MODULAR CASE TYPE A,
Vers. I
PPO (UL 94 V-0)
black RAL 9005
96x96x57mm



B6034021
DIN-MODULAR CASE TYPE A,
Vers. I
PPO (UL 94 V-0)
black RAL 9005
96x96x75mm



B6034031
DIN-MODULAR CASE TYPE A,
Vers. I
PPO (UL 94 V-0)
black RAL 9005
96x96x100mm



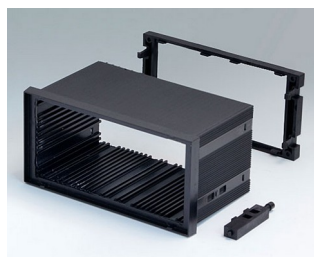
B6034062
DIN-MODULAR CASE TYPE A,
Vers. II
PPO (UL 94 V-0)
black RAL 9005
96x96x124mm



B6034102
DIN-MODULAR CASE TYPE A,
Vers. II
PPO (UL 94 V-0)
black RAL 9005
96x96x179mm



B6043011
DIN-MODULAR CASE TYPE A
PPO (UL 94 V-0)
black RAL 9005
144x72x57mm



B6043021
DIN-MODULAR CASE TYPE A
PPO (UL 94 V-0)
black RAL 9005
144x72x75mm



B6043031
DIN-MODULAR CASE TYPE A
PPO (UL 94 V-0)
black RAL 9005
144x72x100mm



B6043041
DIN-MODULAR CASE TYPE A
PPO (UL 94 V-0)
black RAL 9005
144x72x109mm

DIN-MODULAR CASES TYPE A



B6043061
DIN-MODULAR CASE TYPE A
PPO (UL 94 V-0)
black RAL 9005
144x72x124mm



B6043071
DIN-MODULAR CASE TYPE A
PPO (UL 94 V-0)
black RAL 9005
144x72x131mm



B6043091
DIN-MODULAR CASE TYPE A
PPO (UL 94 V-0)
black RAL 9005
144x72x156mm



B6045011
DIN-MODULAR CASE TYPE A
PPO (UL 94 V-0)
black RAL 9005
144x144x57mm



B6045021
DIN-MODULAR CASE TYPE A
PPO (UL 94 V-0)
black RAL 9005
144x144x75mm



B6045031
DIN-MODULAR CASE TYPE A
PPO (UL 94 V-0)
black RAL 9005
144x144x100mm



B6045051
DIN-MODULAR CASE TYPE A
PPO (UL 94 V-0)
black RAL 9005
144x144x114mm

Accessory to complete



B6112111
Front panel
Aluminium
matt anodised
43.6x43.6x1.5mm



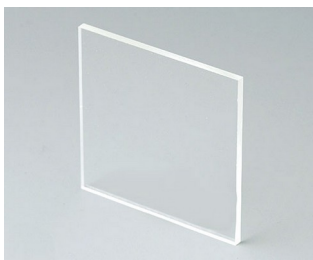
B6112112
Rear panel
Aluminium
matt anodised
42.2x29.6x1mm



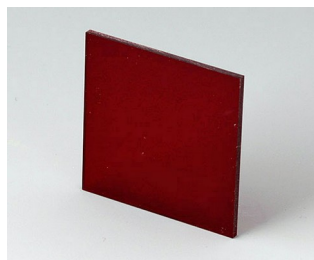
B6112221
Front panel
PPO (UL 94 V-0)
black RAL 9005
43.7x43.7x2mm



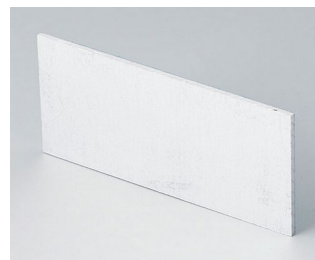
B6112222
Rear panel
PPO (UL 94 V-0)
black RAL 9005
42.3x29.6x1.8mm



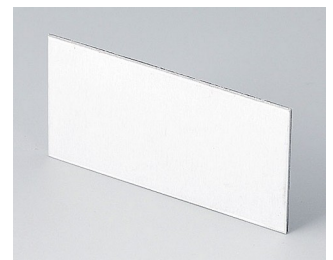
B6112331
Front panel
Acrylic glass
transparent
43.6x43.6x2mm



B6112341
Front panel
Acrylic glass
red transparent
43.6x43.6x2mm



B6121111
Front panel
Aluminium
matt anodised
67.7x31.6x1.5mm



B6121112
Rear panel
Aluminium
matt anodised
57.6x28.6x1mm

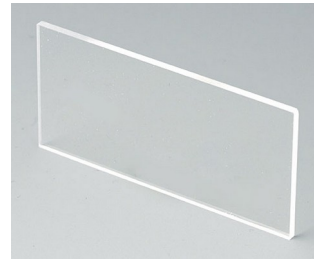
DIN-MODULAR CASES TYPE A



B6121221
Front panel
PPO (UL 94 V-0)
black RAL 9005
67.8x31.7x2mm



B6121222
Rear panel
PPO (UL 94 V-0)
black RAL 9005
57.6x28.7x1.5mm



B6121331
Front panel
Acrylic glass
transparent
67.7x31.6x2mm



B6121341
Front panel
Acrylic glass
red transparent
67.7x31.6x2mm



B6123111
Front panel
Aluminium
matt anodised
67.5x67.5x1.5mm



B6123112
Rear panel
Aluminium
matt anodised
63.7x49.1x1mm



B6123221
Front panel
PPO (UL 94 V-0)
black RAL 9005
67.6x67.6x2mm



B6123222
Rear panel
PPO (UL 94 V-0)
black RAL 9005
63.8x49.2x1.7mm



B6123331
Front panel
Acrylic glass
transparent
67.5x67.5x2mm



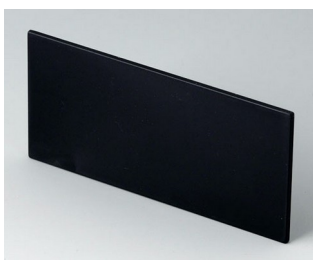
B6123341
Front panel
Acrylic glass
red transparent
67.5x67.5x2mm



B6132111
Front panel
Aluminium
matt anodised
91.5x43.4x1.5mm



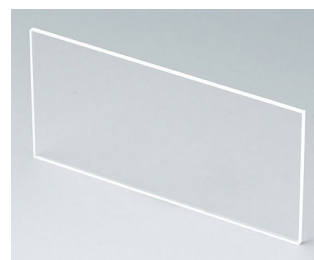
B6132112
Rear panel
Aluminium
matt anodised
73.5x39.6x1mm



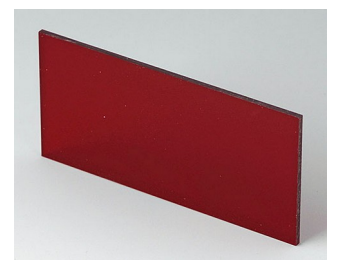
B6132221
Front panel
PPO (UL 94 V-0)
black RAL 9005
91.6x43.5x2mm



B6132222
Rear panel
PPO (UL 94 V-0)
black RAL 9005
73.6x39.75x1.7mm



B6132331
Front panel
Acrylic glass
transparent
91.5x43.4x2mm



B6132341
Front panel
Acrylic glass
red transparent
91.5x43.4x2mm

DIN-MODULAR CASES TYPE A



B6134111
Front panel
Aluminium
matt anodised
90.6x90.6x1.5mm



B6134112
Rear panel
Aluminium
matt anodised
86.7x71.7x1.5mm



B6134221
Front panel
PPO (UL 94 V-0)
black RAL 9005
90.7x90.7x2mm



B6134222
Rear panel
PPO (UL 94 V-0)
black RAL 9005
86.8x71.8x1.7mm



B6134331
Front panel
Acrylic glass
transparent
90.6x90.6x2.2mm



B6134341
Front panel
Acrylic glass
red transparent
90.6x90.6x2mm



B6143111
Front panel
Aluminium
matt anodised
139.2x67.3x1.5mm



B6143112
Rear panel
Aluminium
matt anodised
118.9x62.6x1.5mm



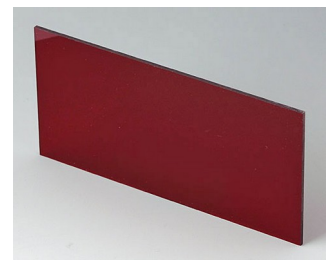
B6143221
Front panel
PPO (UL 94 V-0)
black RAL 9005
139.3x67.5x2mm



B6143222
Rear panel
PPO (UL 94 V-0)
black RAL 9005
119.1x62.7x2mm



B6143331
Front panel
Acrylic glass
transparent
139.2x67.3x2mm



B6143341
Front panel
Acrylic glass
red transparent
139.2x67.3x2mm



B6145111
Front panel
Aluminium
matt anodised
138x138x1.5mm



B6145112
Rear panel
Aluminium
matt anodised
131.3x118.6x1.5mm



B6145331
Front panel
Acrylic glass
transparent
138x138x3mm



B6145341
Front panel
Acrylic glass
red transparent
138x138x3mm

DIN-MODULAR CASES TYPE A

Accessory "protection"



B6123533
Protection cover
PC
transparent



B6132533
Protection cover
PC
transparent



B6134533
Protection cover
PC
transparent



B6143533
Protection cover
PC
transparent



B6145533
Protection cover
PC
transparent

Subject to technical modification without notice. © by OKW Gehäusesysteme, Buchen/Germany.