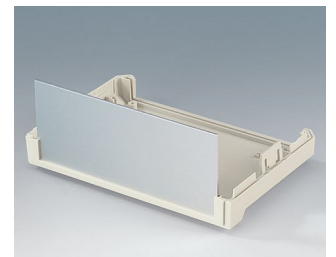
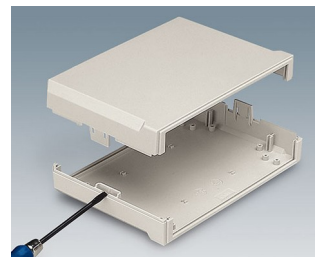
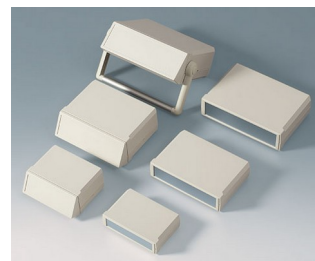


MOTEC

Modern desktop enclosures with wide front panels

With their generous dimensions, stylish design and ergonomic control panels, our MOTEC plastic enclosures are designed to distinguish your electronics from more conventional systems.

- stylish range of instrument enclosures
- three plan sizes
- different case heights for individual configurations
- high-quality material ABS (UL 94 HB)
- robust clip-together assembly to minimize your assembly work
- access with flat screwdriver only, for security
- ergonomic, moulded sloping control panel with recessed area for a membrane keypad
- aluminium panels ordered separately
- versions with handle for ergonomically tilted position or carrying
- four non-slip self-adhesive feet included
- protection class IP 40
- internal guide grooves for the vertical insertion of partitions and PCBs
- internal screw pillars for PCBs etc.



MOTEC

Applications and Examples

Measuring and control technology, feedback control, peripheral devices and interfaces, switchboxes, modems, laboratory equipment, medical and wellness devices, etc.



Rhinometer

Customising Options

What do you still need for your own very personal product? We can supply enclosures and tuning knobs with all necessary modifications for fitting your electronic components. Customising options for Motec



Machining



Lacquering



Printing



Laser marking



Decor foils



Special material



EMC shielding



Installation / Assembly
of accessories

Select Versions



B3015117
MOTEC S, flat/flat
ABS (UL 94 HB)
off-white RAL 9002
155x105x40mm
IP 40



B3015127
MOTEC S, flat/high
ABS (UL 94 HB)
off-white RAL 9002
155x105x65mm
IP 40



B3015137
MOTEC S, high/high
ABS (UL 94 HB)
off-white RAL 9002
155x105x90mm
IP 40



B3020117
MOTEC M, flat/flat
ABS (UL 94 HB)
off-white RAL 9002
205x140x50mm
IP 40

MOTEC



B3020127
MOTEC M, flat/high
ABS (UL 94 HB)
off-white RAL 9002
205x140x75mm
IP 40



B3020137
MOTEC M, high/high
ABS (UL 94 HB)
off-white RAL 9002
205x140x100mm
IP 40



B3020147
MOTEC M, with handle bar
ABS (UL 94 HB)
off-white RAL 9002
205x140x75mm
IP 40



B3023117
MOTEC-L, flat/flat
ABS (UL 94 HB)
off-white RAL 9002
235x165x60mm
IP 40



B3023127
MOTEC L, flat/high
ABS (UL 94 HB)
off-white RAL 9002
235x165x85mm
IP 40

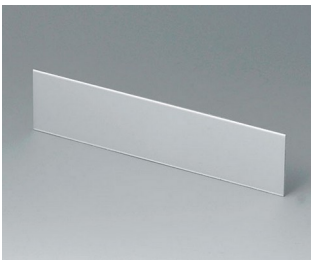


B3023137
MOTEC L, high/high
ABS (UL 94 HB)
off-white RAL 9002
235x165x110mm
IP 40

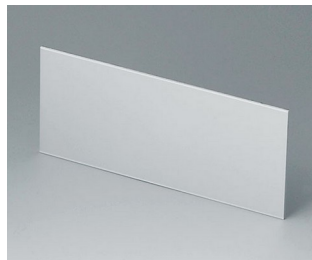


B3023147
MOTEC L, with handle bar
ABS (UL 94 HB)
off-white RAL 9002
235x165x85mm
IP 40

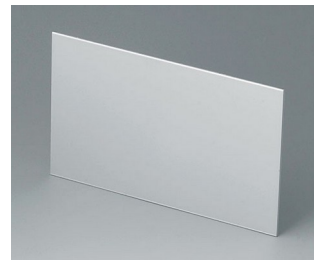
Accessory to complete



B3115100
Front / rear panel S
Aluminium
matt anodised
136x32x1.5mm



B3115110
Front / rear panel S
Aluminium
matt anodised
136x57x1.5mm



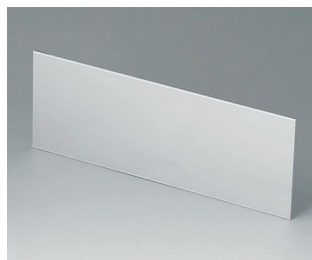
B3115120
Front / rear panel S
Aluminium
matt anodised
136x82x1.5mm



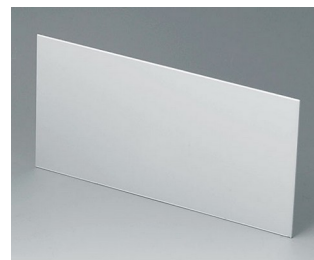
B3115167
Sloping control panel S, flat/high
ABS (UL 94 HB)
off-white RAL 9002



B3120100
Front / rear panel M
Aluminium
matt anodised
185x42x1.5mm



B3120110
Front / rear panel M
Aluminium
matt anodised
185x67x1.5mm



B3120120
Front / rear panel M
Aluminium
matt anodised
185x92x1.5mm



B3120167
Sloping control panel M, flat/high
ABS (UL 94 HB)
off-white RAL 9002

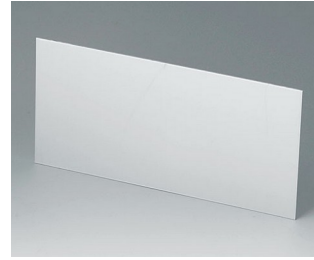
MOTEC



B3123100
Front / rear panel L
Aluminium
matt anodised
214x52x1.5mm



B3123110
Front / rear panel L
Aluminium
matt anodised
214x77x1.5mm



B3123120
Front / rear panel L
Aluminium
matt anodised
214x102x1.5mm



B3123167
Sloping control panel L, flat/high
ABS (UL 94 HB)
off-white RAL 9002



B3123177
Sloping control panel L,
high/high
ABS (UL 94 HB)
off-white RAL 9002

Accessory "screws"



A9199008
Set of screws

Subject to technical modification without notice. © by OKW Gehäusesysteme, Buchen/Germany.