

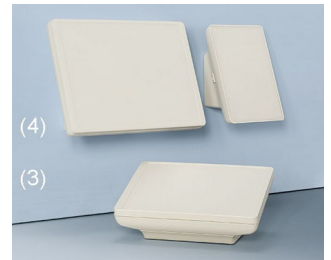
# INTERFACE-TERMINAL

## Multifunction electronic enclosures

Highly innovative modular plastic enclosures system which can be configured to meet all the requirements of today's man-machine interfaces.

- aesthetic and ergonomic design
- uniquely, the operator can decide to use the electronics as a mobile or as a stationary unit
- plenty of space for operating elements, graphic displays and touch screens (S: 6.4"/16 cm, M: 8.4"/21 cm, L: 10.4"/26 cm)
- available with either flat or high bottom part for individual installation configurations, interfaces, cable inputs and outputs etc.
- optional front panel styles: ABS cover and flat panel, aluminium front panel and glass panel for touch screens  
installation of tablets on demand
- protection class IP 54 with sealing gaskets (accessory)
- internal fastening pillars for PCBs and components
- ordered as individual components for multiple configurations:
- **mobile (1)**  
with/without battery compartment (5 x AA), accessible from the outside, incl. protection against incorrect insertion as well as anti-rotation device; user-friendly design with attractive flat styling in the handle area; finger recesses on the underside ensure a secure grip
- **enclosures with base or flat wall suspension element (2)**  
for data transmission and charging the enclosure snaps into base or flat wall suspension element; contacts available as accessories; operating panel can be mounted either vertically or horizontally; the ergonomically inclined base offers plenty of space for electronics
- **desk-top screwed (3)**  
operating panel inclined by 20° whether vertically or horizontally mounted; hidden screw fixing; the ergonomically inclined base offers plenty of space for connectors and cable glands; rubber feet supplied with the case ensures non-slip desktop positioning
- **desk-top/wall mounting, secured by latch lock (4)**  
unique interface between a stationary and a mobile component; simplified assembly by snap-in interfaces; the ergonomically inclined base offers plenty of space for plug connectors, electronics as well as wiring; base freely accessible; direct wall mounting of the base; mobile unit can be mounted either vertically or horizontally
- **installation enclosures (5)**  
if the architectural standards are particularly high, i.e. in historically buildings, INTERFACE-TERMINAL enclosures can also be harmoniously integrated in walls or front panels; installation in plant and machinery is also possible; easy wall installation with installation assembly kit

# INTERFACE-TERMINAL



# INTERFACE-TERMINAL

## Applications and Examples

Unique variety of applications: handheld – desk-top – wall mounted – installation

- Peripheral and interface equipment
- Office applications
- Communications technology
- Safety engineering
- Biometrics
- Medical and laboratory technology
- Health care
- IoT/IIoT
- Gateways
- Automation
- Measuring/regulating/controlling



Device for bioelectrical patient analysis



Process control for plant Management



Self-monitoring emergency call system



Smart Home Console system



Terminal for personnel time recording



Wireless data logger

## Customising Options

What do you still need for your own very personal product? We can supply enclosures and tuning knobs with all necessary modifications for fitting your electronic components.  
Customising options for Interface-Terminal

# INTERFACE-TERMINAL



Machining



Lacquering



Printing



Laser marking



Decor foils



Special material

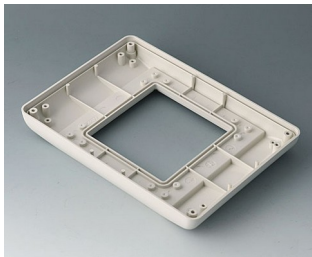


EMC shielding

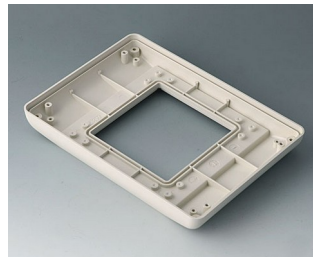


Installation / Assembly  
of accessories

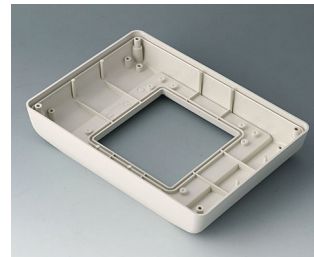
## Select Versions



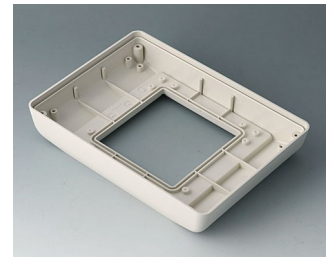
**B4042707**  
Bottom part S flat, version I  
ABS (UL 94 HB)  
off-white RAL 9002  
190x135x24.5mm  
IP 54 opt.



**B4042717**  
Bottom part S flat, version II  
ABS (UL 94 HB)  
off-white RAL 9002  
190x135x24.5mm  
IP 54 opt.



**B4042757**  
Bottom part S high, version I  
ABS (UL 94 HB)  
off-white RAL 9002  
190x135x34.5mm  
IP 54 opt.



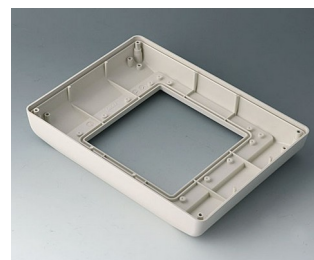
**B4042767**  
Bottom part S high, version II  
ABS (UL 94 HB)  
off-white RAL 9002  
190x135x34.5mm  
IP 54 opt.



**B4044707**  
Bottom part M flat, version I  
ABS (UL 94 HB)  
off-white RAL 9002  
225x165x25.5mm  
IP 54 opt.



**B4044717**  
Bottom part M flat, version II  
ABS (UL 94 HB)  
off-white RAL 9002  
225x165x25.5mm  
IP 54 opt.



**B4044757**  
Bottom part M high, version I  
ABS (UL 94 HB)  
off-white RAL 9002  
225x165x35.5mm  
IP 54 opt.



**B4044767**  
Bottom part M high, version II  
ABS (UL 94 HB)  
off-white RAL 9002  
225x165x35.5mm  
IP 54 opt.

# INTERFACE-TERMINAL



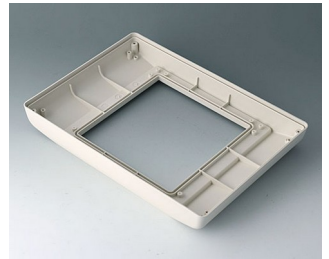
**B4046707**  
Bottom part L flat, version I  
ABS (UL 94 HB)  
off-white RAL 9002  
275x195x26.5mm  
IP 54 opt.



**B4046717**  
Bottom part L flat, version II  
ABS (UL 94 HB)  
off-white RAL 9002  
275x195x26.5mm  
IP 54 opt.



**B4046757**  
Bottom part L high, version I  
ABS (UL 94 HB)  
off-white RAL 9002  
275x195x36.5mm  
IP 54 opt.



**B4046767**  
Bottom part L high, version II  
ABS (UL 94 HB)  
off-white RAL 9002  
275x195x36.5mm  
IP 54 opt.

## System components to complete



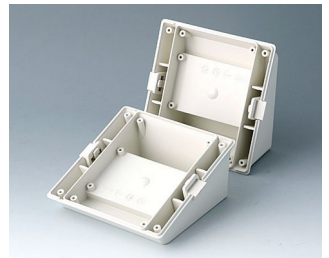
**B4042407**  
Cover S  
ABS (UL 94 HB)  
off-white RAL 9002  
190x135x14mm



**B4042827**  
Base S - desk-top -  
ABS (UL 94 HB)  
off-white RAL 9002  
123x123x53mm



**B4042837**  
Base S - charging station, case  
deposit mobile  
ABS (UL 94 HB)  
off-white RAL 9002  
123x123x60mm



**B4042847**  
Base S - desk-top/wall -  
ABS (UL 94 HB)  
off-white RAL 9002  
123x123x53mm



**B4044407**  
Cover M  
ABS (UL 94 HB)  
off-white RAL 9002  
225x165x14mm



**B4044827**  
Base M - desk-top -  
ABS (UL 94 HB)  
off-white RAL 9002  
153x153x63mm



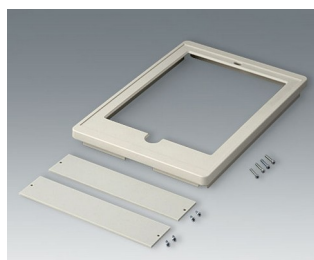
**B4044837**  
Base M - charging station, case  
deposit mobile  
ABS (UL 94 HB)  
off-white RAL 9002  
153x153x70mm



**B4044847**  
Base M - desk-top/wall -  
ABS (UL 94 HB)  
off-white RAL 9002  
153x153x63mm



**B4046407**  
Cover L  
ABS (UL 94 HB)  
off-white RAL 9002  
275x195x25.5mm



**B4046427**  
Cover L, for iPad Air  
ABS (UL 94 HB)  
off-white RAL 9002  
275x195x25.5mm



**B4046827**  
Base L - desk-top -  
ABS (UL 94 HB)  
off-white RAL 9002  
183x183x73mm



**B4046837**  
Base L - charging station, case  
deposit mobile  
ABS (UL 94 HB)  
off-white RAL 9002  
183x183x80mm

# INTERFACE-TERMINAL



**B4046847**  
Base L - desk-top/wall -  
ABS (UL 94 HB)  
off-white RAL 9002  
183x183x73mm



**B4142047**  
Battery compartment and lid S, 5  
x AA  
ABS (UL 94 HB)  
off-white RAL 9002



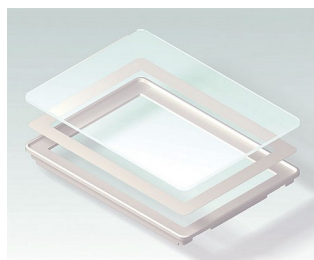
**B4142106**  
Front panel S  
Aluminium  
matt anodised  
186.5x131.5x2mm



**B4142107**  
Front panel S  
ABS (UL 94 HB)  
off-white RAL 9002  
190.6x135.6x14.5mm



**B4142167**  
Bottom panel with handle recess  
S  
ABS (UL 94 HB)  
off-white RAL 9002



**B4142203**  
Glass panel S  
Glass  
clear  
190.6x135.6x16.7mm



**B4142247**  
Wall suspension element S  
ABS (UL 94 HB)  
off-white RAL 9002



**B4142257**  
Bottom panel with snap-in strips  
S  
ABS (UL 94 HB)  
off-white RAL 9002



**B4142587**  
Installation assembly kit S, flat  
ABS (UL 94 HB)  
off-white RAL 9002  
234x185mm



**B4142597**  
Installation assembly kit S, high  
ABS (UL 94 HB)  
off-white RAL 9002  
234x185mm



**B4144047**  
Battery compartment and lid M,  
5 x AA  
ABS (UL 94 HB)  
off-white RAL 9002



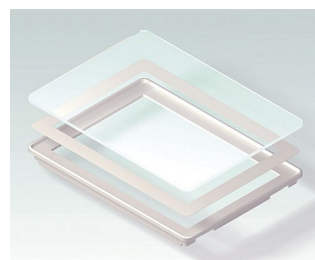
**B4144106**  
Front panel M  
Aluminium  
matt anodised  
221.5x161.5x2mm



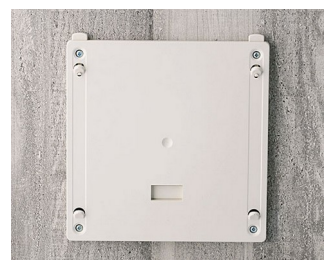
**B4144107**  
Front panel M  
ABS (UL 94 HB)  
off-white RAL 9002  
225.6x165.6x15.5mm



**B4144167**  
Bottom panel with handle recess  
M  
ABS (UL 94 HB)  
off-white RAL 9002



**B4144203**  
Glass panel M  
Glass  
clear  
225.6x165.6x17.7mm



**B4144247**  
Wall suspension element M  
ABS (UL 94 HB)  
off-white RAL 9002

# INTERFACE-TERMINAL



**B4144257**  
Bottom panel with snap-in strips  
M  
ABS (UL 94 HB)  
off-white RAL 9002



**B4144587**  
Installation assembly kit M, flat  
ABS (UL 94 HB)  
off-white RAL 9002  
272x218mm



**B4144597**  
Installation assembly kit M, high  
ABS (UL 94 HB)  
off-white RAL 9002  
272x218mm



**B4146047**  
Battery compartment and lid L, 5  
x AA  
ABS (UL 94 HB)  
off-white RAL 9002



**B4146106**  
Front panel L  
Aluminium  
matt anodised  
271.5x191.5x2mm



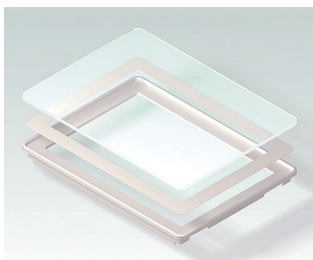
**B4146107**  
Front panel L  
ABS (UL 94 HB)  
off-white RAL 9002  
275.6x195.6x15.5mm



**B4146126**  
Front panel L, for iPad Air  
Aluminium  
matt anodised  
275.4x195.4x4mm



**B4146167**  
Bottom panel with handle recess  
L  
ABS (UL 94 HB)  
off-white RAL 9002



**B4146203**  
Glass panel L  
Glass  
clear  
275.6x195.6x17.7mm



**B4146247**  
Wall suspension element L  
ABS (UL 94 HB)  
off-white RAL 9002



**B4146257**  
Bottom panel with snap-in strips  
L  
ABS (UL 94 HB)  
off-white RAL 9002



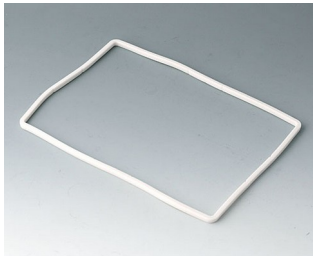
**B4146587**  
Installation assembly kit L, flat  
ABS (UL 94 HB)  
off-white RAL 9002  
325x251mm



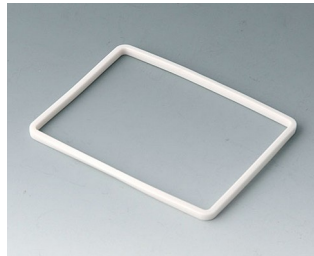
**B4146597**  
Installation assembly kit L, high  
ABS (UL 94 HB)  
off-white RAL 9002  
325x251mm

# INTERFACE-TERMINAL

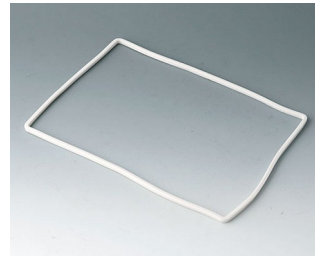
## Accessory "protection"



**B4142005**  
Sealing S (bottom part - front design)  
SEBS (TPE)



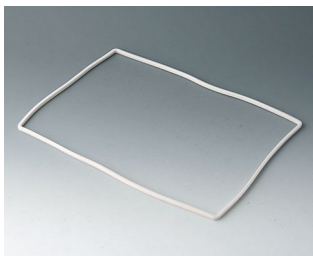
**B4142006**  
Sealing S (bottom part - base/bot. panel/bat. comp...)  
SEBS (TPE)



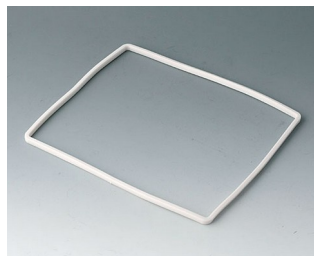
**B4144005**  
Sealing M (bottom part - front design)  
SEBS (TPE)



**B4144006**  
Sealing M (bottom part - base/bot. panel/bat. comp...)  
SEBS (TPE)

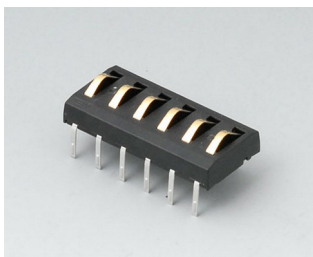


**B4146005**  
Sealing L (bottom part - front design)  
SEBS (TPE)

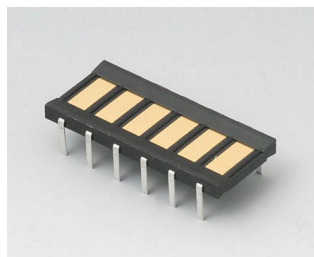


**B4146006**  
Sealing L (bottom part - base/bot. panel/bat. comp...)  
SEBS (TPE)

## Accessory



**A9178007**  
Contacts, male  
gold-plated



**A9178008**  
Contacts, female  
gold-plated

Subject to technical modification without notice. © by OKW Gehäusesysteme, Buchen/Germany.