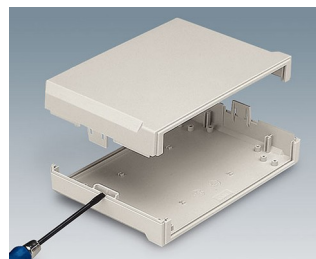
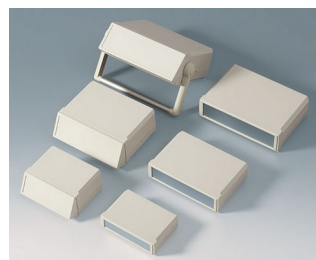


# MOTEC 大接口面机盒

## 接口面积特大的机盒

具备宽敞舒适的操作和接口表面是 MOTEC 大接口面台式机盒与传统机盒系统的主要区别。

- 现代化、 时髦的设计款式
- 3 种规格
- 不同的机盒高度达到不同的应用配置
- 优质材料 ABS (UL 94 HB)
- 通过无螺钉的外壳组装方式，达到最小的装配工作量; 利用扁头螺丝刀解锁
- 符合人体工程学的倾斜操作面板具有用于保护膜键盘的凹槽表面，作为附件
- 铝合金前面板作为附件
- 携带提手可作为机盒的桌面支架和移动提手
- 自粘、透明的盒脚确保机盒的安全稳立
- 防护等级 IP 40
- 导槽用于分隔板和电路板的垂直插入安装
- 固定柱用于固定电路板等



# MOTEC 大接口面机盒

## 应用示例

测量和控制技术。工艺工程控制。计算机外围设备和界面接口。开关控制和调制解调器。医疗和实验室技术领域。



Rhinometer

## 按客户要求修改加工

如何体现您的特殊产品？如有需要，我们执行所有必要的修改和精加工，提供组装完毕的机盒。产品类型用于 Motec 大接口面机盒



机械加工



表面涂渡



图文打印于机盒



激光打印字体



装饰膜



特殊材质



EMC 保护



制备 / 组装

## 类型



**B3015117**  
MOTEC S, flat/flat  
ABS (UL 94 HB)  
off-white RAL 9002  
155x105x40mm  
IP 40



**B3015127**  
MOTEC S, flat/high  
ABS (UL 94 HB)  
off-white RAL 9002  
155x105x65mm  
IP 40



**B3015137**  
MOTEC S, high/high  
ABS (UL 94 HB)  
off-white RAL 9002  
155x105x90mm  
IP 40



**B3020117**  
MOTEC M, flat/flat  
ABS (UL 94 HB)  
off-white RAL 9002  
205x140x50mm  
IP 40

# MOTEC 大接口面机盒



**B3020127**  
MOTEC M, flat/high  
ABS (UL 94 HB)  
off-white RAL 9002  
205x140x75mm  
IP 40



**B3020137**  
MOTEC M, high/high  
ABS (UL 94 HB)  
off-white RAL 9002  
205x140x100mm  
IP 40



**B3020147**  
MOTEC M, with handle bar  
ABS (UL 94 HB)  
off-white RAL 9002  
205x140x75mm  
IP 40



**B3023117**  
MOTEC-L, flat/flat  
ABS (UL 94 HB)  
off-white RAL 9002  
235x165x60mm  
IP 40



**B3023127**  
MOTEC L, flat/high  
ABS (UL 94 HB)  
off-white RAL 9002  
235x165x85mm  
IP 40

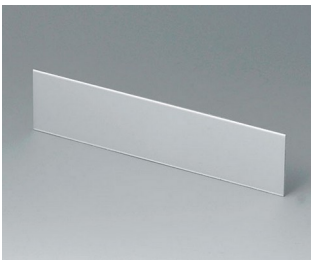


**B3023137**  
MOTEC L, high/high  
ABS (UL 94 HB)  
off-white RAL 9002  
235x165x110mm  
IP 40



**B3023147**  
MOTEC L, with handle bar  
ABS (UL 94 HB)  
off-white RAL 9002  
235x165x85mm  
IP 40

## 需加附件使产品完整



**B3115100**  
Front / rear panel S  
Aluminium  
matt anodised  
136x32x1.5mm



**B3115110**  
Front / rear panel S  
Aluminium  
matt anodised  
136x57x1.5mm



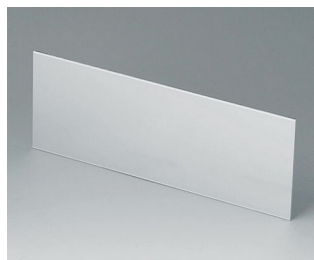
**B3115120**  
Front / rear panel S  
Aluminium  
matt anodised  
136x82x1.5mm



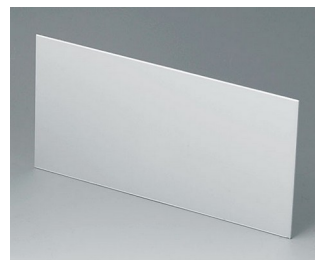
**B3115167**  
Sloping control panel S, flat/high  
ABS (UL 94 HB)  
off-white RAL 9002



**B3120100**  
Front / rear panel M  
Aluminium  
matt anodised  
185x42x1.5mm



**B3120110**  
Front / rear panel M  
Aluminium  
matt anodised  
185x67x1.5mm

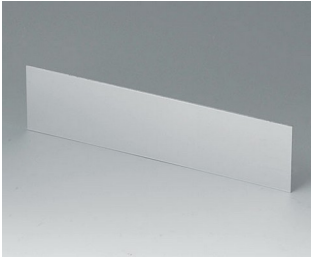


**B3120120**  
Front / rear panel M  
Aluminium  
matt anodised  
185x92x1.5mm

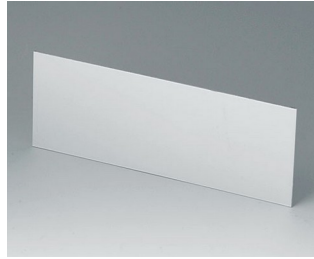


**B3120167**  
Sloping control panel M, flat/high  
ABS (UL 94 HB)  
off-white RAL 9002

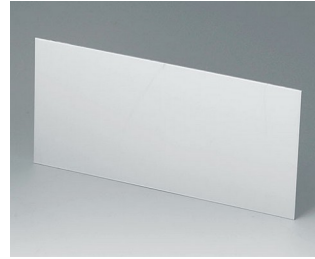
# MOTEC 大接口面机盒



**B3123100**  
Front / rear panel L  
Aluminium  
matt anodised  
214x52x1.5mm



**B3123110**  
Front / rear panel L  
Aluminium  
matt anodised  
214x77x1.5mm



**B3123120**  
Front / rear panel L  
Aluminium  
matt anodised  
214x102x1.5mm



**B3123167**  
Sloping control panel L, flat/high  
ABS (UL 94 HB)  
off-white RAL 9002



**B3123177**  
Sloping control panel L,  
high/high  
ABS (UL 94 HB)  
off-white RAL 9002

## “螺钉” 附件



**A9199008**  
Set of screws

保留技术更改可能性。© OKW 机盒系统, Buchen/德国。